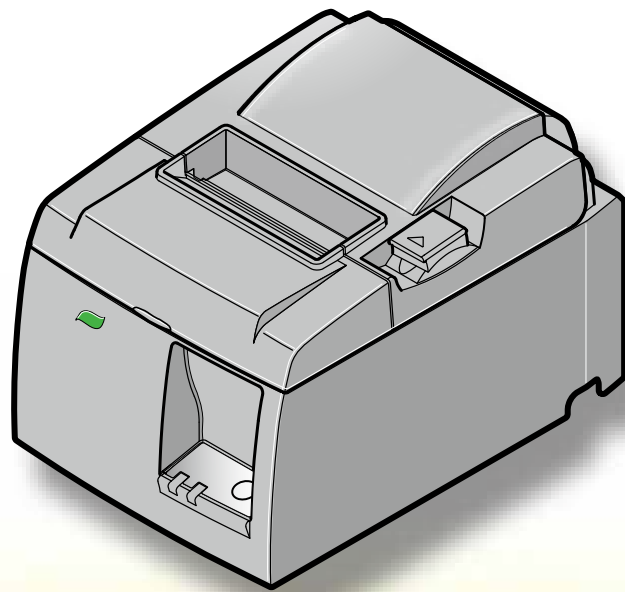


stair 
TSP100 
futurePRNT

ECO Setting Manual



Applicable model: TSP100IU

Rev. 1.0

Contents

Introduction	1
1. Starting the Configuration Utility	1
2. ECO Settings	3
2-1. Auto Reduction Setting	3
2-2. Top Margin to First Line	4
2-3. On demand	5
3. Indicator	9
4. Revision History	10

Introduction

The TSP100IIU is equipped with an ECO function to help protect the environment while also reducing costs.

This manual contains information about the ECO function.(*1)

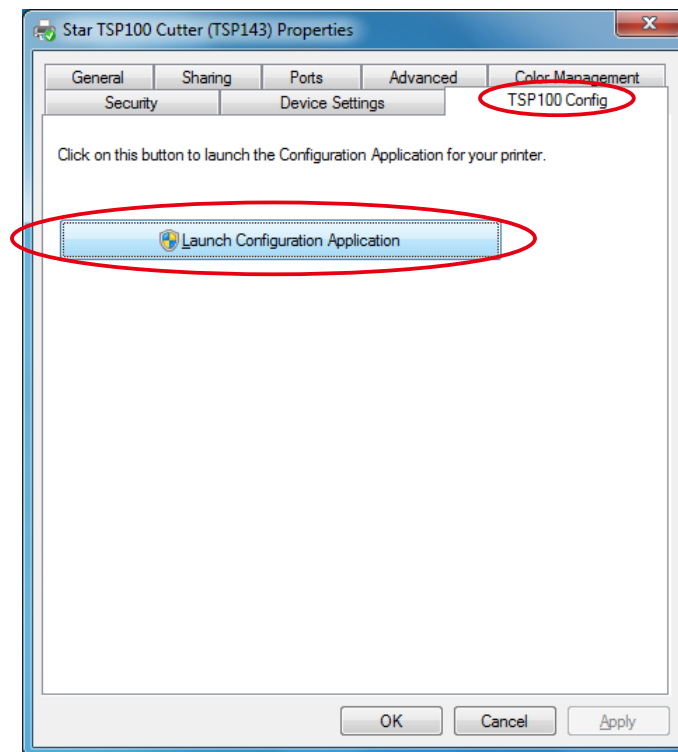
How to set the ECO function and the results of the settings are the same for both the Star line mode and ESC/POS mode.

*1) To install or uninstall the software, and for details about functions other than the ECO function, refer to the **Software Manual**.

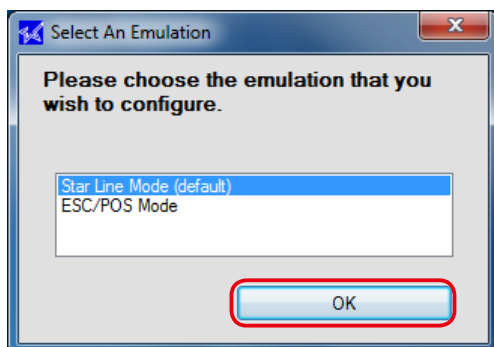
1. Starting the Configuration Utility

Use one of the following methods to open the **Configuration Application** dialog box. At the Windows Start menu, select **All Programs** → **StarMicronics** → **Star TSP100** → **Configuration Utility**, or perform steps ①–④ below.

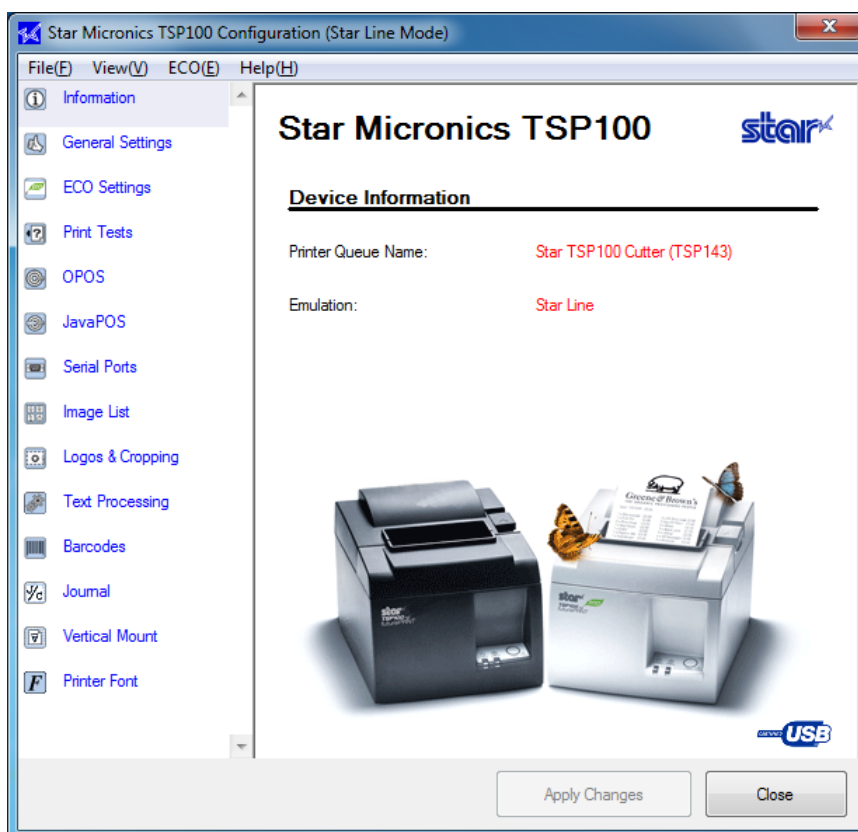
- ① At the Windows Start menu, select **Devices and Printers** (or **Printers and Faxes** if using Windows XP).
- ② Right-click the **Star TSP100** printer icon in the folder that appears, and then select **Printer Properties** (or **Properties** if using Windows XP).
- ③ At the **Properties** dialog box, click the **TSP100 Config** tab.
- ④ Click the **Launch Configuration Application** button.



- ⑤ Select an emulation, and then click the **OK** button.



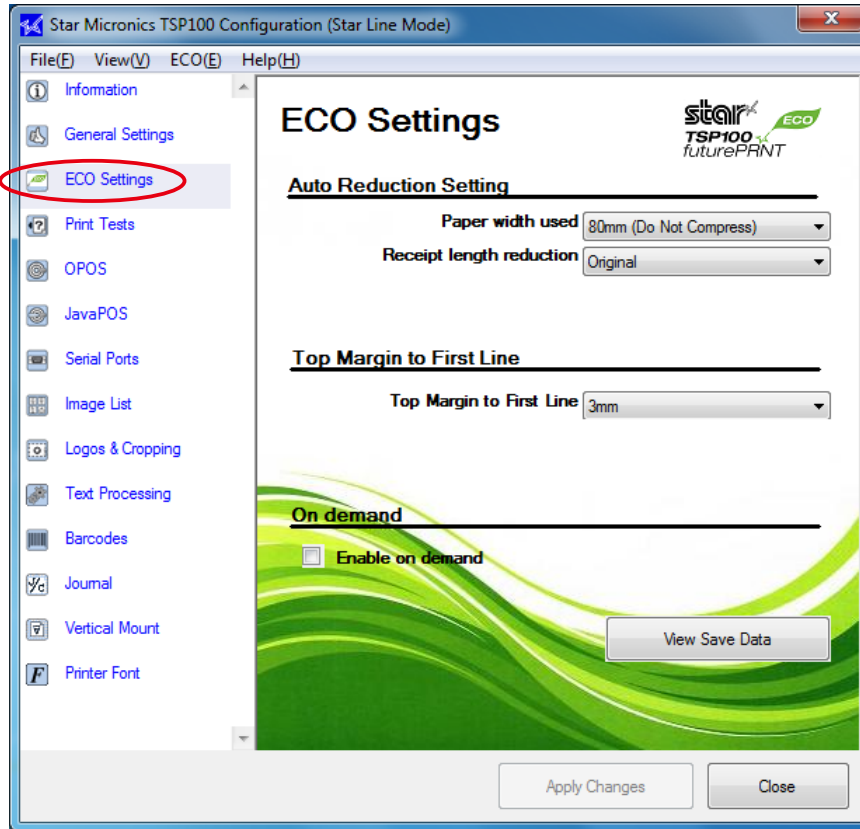
- ⑥ The configuration utility starts and the following dialog box appears.



2. ECO Settings

Click the **ECO Settings** tab on the left side of the dialog box.

When changing the settings, be sure to click the **Apply Changes** button after changing the settings. The changed settings are enabled when the **Apply Changes** button is clicked.



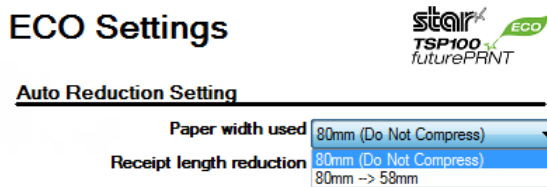
2-1. Auto Reduction Setting

This function reduces the overall size of the printing.



However, to prevent any scanning errors, the size of printed barcodes is not reduced even if the reduction settings are selected.

■ Paper width used



The default setting is **80mm (Do Not Compress)**.

By changing the setting to **80mm->58mm**, the printing area is compressed widthwise so that 58 mm width roll paper can be used instead of 80 mm width roll paper.



- 1) If the printing width is set to 51 mm using **General Settings** in the configuration utility, the **80mm->58mm** setting in Paper width used is disabled.
- 2) When Paper width used is set to **80mm->58mm**, the barcode will be aligned on the left margin of the paper when printed.
If the printed barcode will be wider than **80mm->58mm**, the barcode data will not be printed.

■ Receipt length reduction

ECO Settings



Auto Reduction Setting

Paper width used 80mm (Do Not Compress) ▼

Receipt length reduction Original ▼

- Original
- 25% reduction
- 50% reduction

The default setting is **Original** (no reduction).

The printing area can be compressed 50% reduction or 25% reduction lengthwise.



Note Because the size of printed barcodes is not reduced even if the receipt length reduction settings are selected, the receipt length will be longer than the length for the reduction ratio when printing data that contains barcodes.

2-2. Top Margin to First Line

The length from the leading edge of the paper to the first line of printing can be specified.

Top Margin to First Line

Top Margin to First Line 3mm ▼

- 11mm
- 10mm
- 9mm
- 8mm
- 7mm
- 6mm
- 5mm
- 4mm
- 3mm

On demand

Enable on demand

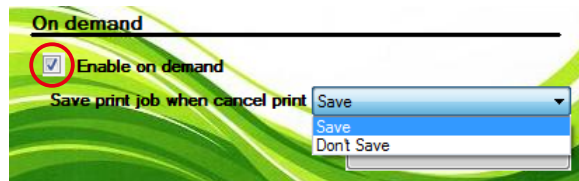
The default setting is **3mm**.



Memo To use the ECO function effectively, **3mm** is recommended. However, the paper will be automatically rewound after each printing if 10 mm or less is specified for the setting. To reduce the printing time, specify **11mm** for the setting.

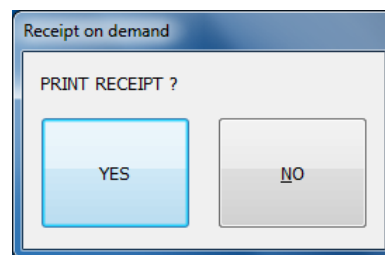
2-3. On demand

This function reduces the amount of paper wasted on unnecessary printings by prompting the user to select whether or not to print the data.



■ Enable on demand

To enable the on demand function, select the check box. When the on demand function is enabled, the following confirmation dialog box will appear each time data is sent from the computer to the printer.



When **YES** is clicked, the data will be printed.

When **NO** is clicked, the printing will be canceled.



Normally, the confirmation dialog box appears before the data is printed. However, in rare cases, the confirmation dialog box may not appear, the dialog box may appear after the data is printed, or other problems with the operation of the function may occur. If any of these problems occur, restart your computer. After restarting the computer, check that the on demand function is enabled and that the confirmation dialog box appears at the proper time.

■ Saving Canceled Data

When the on demand function is enabled, the data for the canceled printing can be saved or deleted.

When **Don't Save** is selected, the data for the canceled printing will be deleted.

When **Save** is selected, the data for the canceled printing will be saved in the following folder.

For Windows 7/Vista: Hard disk:\User\< Folder for logged-on user name >\APPData\Roaming\ Star\ TSP100\Ondemand

For Windows XP: Hard disk:\Documents.and.Setting\< Folder for logged-on user name >\ Application.Data\Star\TSP100\Ondemand



1) To check the data saved in the folder above, perform the following setting before viewing the data.

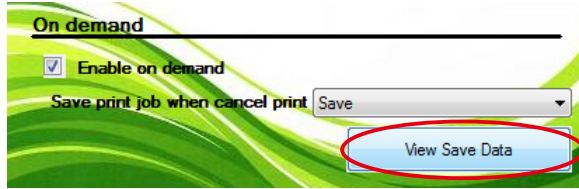
At the Windows Start menu, select **Control Panel** → **Folder Options**, click the **View** tab, and then click **Show hidden files and folders**.

2) The data saved in the folder is not deleted automatically regardless of the elapsed time. Therefore, it is recommended to periodically delete any unnecessary data.

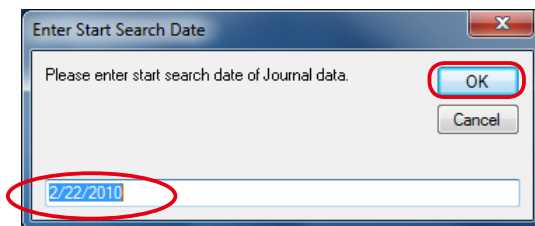
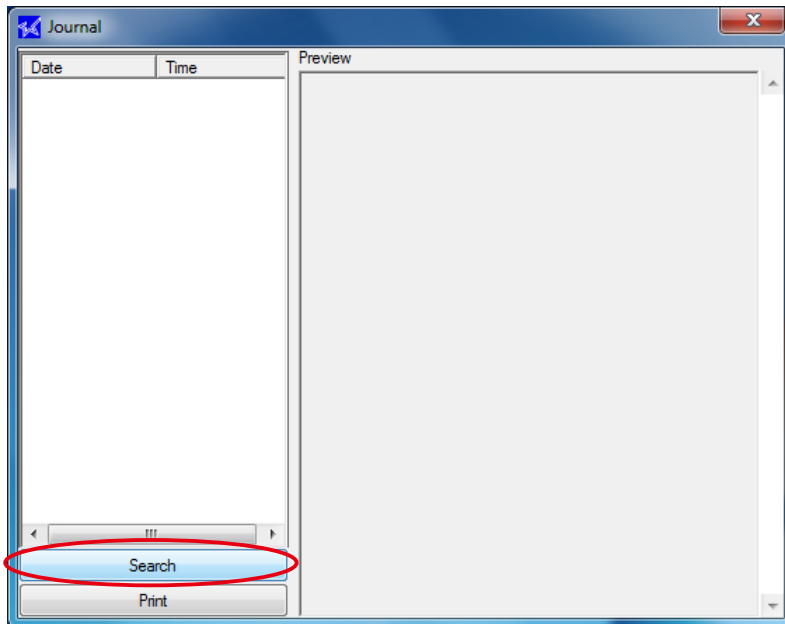
■ View Save Data

The data for canceled printings can be viewed. In addition, to print data that was saved from a canceled printing, perform the following procedure.

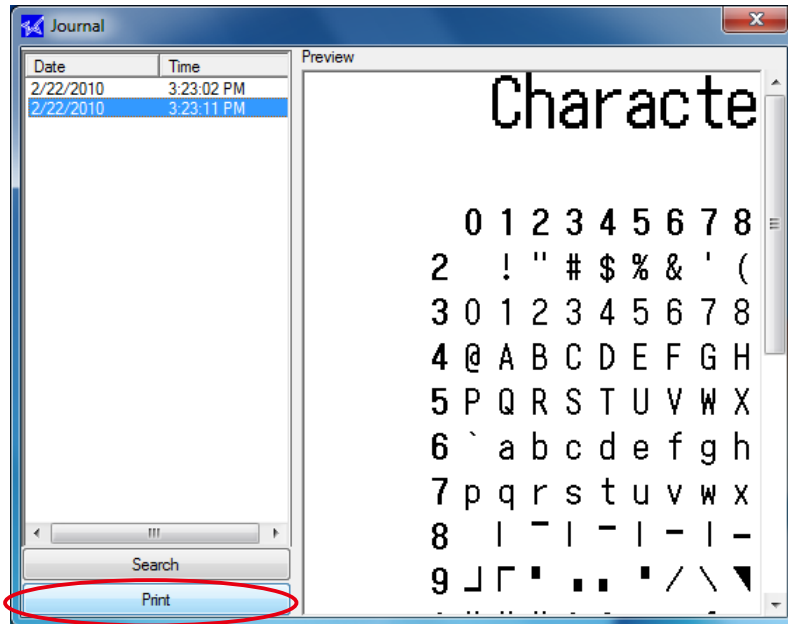
- ① Click **View Save Data**.



- ② Click **Search**, specify the search date, and then click the **OK** button.



③ The saved data appears. Click **Print** to print the data.



 **Caution** When using the on demand function, check the following information.

When the on demand function is enabled, the time that the confirmation dialog box appears may vary according to the printing channel that is used.

The time that the confirmation dialog box appears for each channel is as follows:

	Printer Driver	OPOS	JavaPOS	WritePrinter API	Virtual Serial Port
Display trigger	Immediately after a cut command is sent			Immediately after a cut command is sent (Refer to following *.)	

*1) Even if the write data contains several cut commands, the last cut command is recognized as the trigger and the confirmation dialog box appears. However, when multiple receipts are sent in a single batch through a virtual serial port, the data will be divided automatically for processing if it exceeds the buffer capacity. In this case, the cut command just before the buffer becomes full is the trigger.

When using a virtual serial port, it is recommended to send the data one receipt (data + cut command) at a time.

*2) Even if the write data is sent one line at a time, the confirmation dialog box will not appear and the data will not be printed until a cut command is received.

**Note**

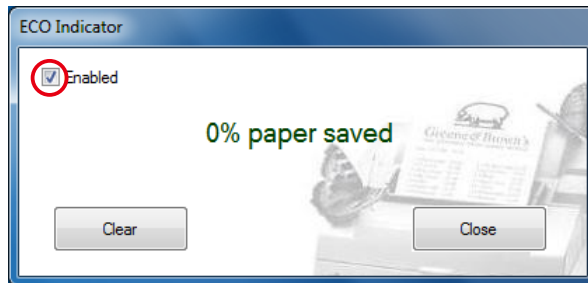
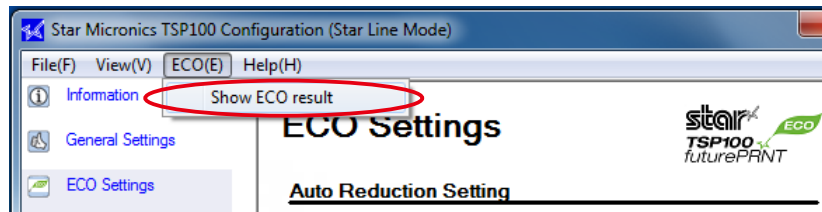
When switching from the TSP100IIU to the TSP100U, the ECO settings may not appear in the TSP100U configuration utility. If the ECO settings were used for the TSP100IIU, perform the following procedure to reset all of the settings to the default settings, and then use the TSP100U.

- ① Insert the CD-ROM into your computer's CD-ROM drive.
- ② Start the configuration utility.
- ③ Import the following files by selecting **File** → **Import**.
Star line mode : CD-drive:\Windows\ConfigurationSettingFiles\default.config.xml
ESC/POS mode : CD-drive:\Windows\ConfigurationSettingFiles\escpos.xml

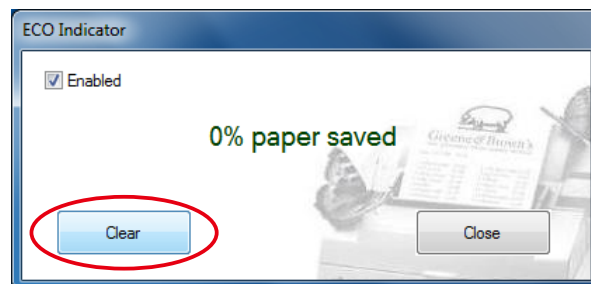
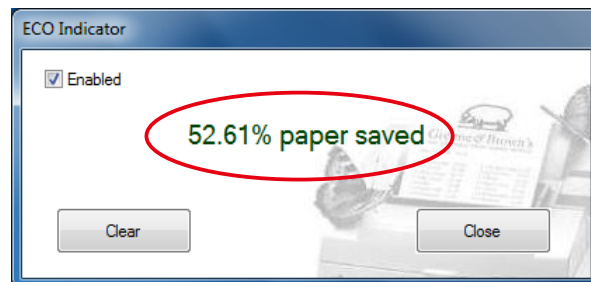
3. Indicator

When using the printer with the ECO settings, the percentage of paper saved can be confirmed by enabling this function.

- ① Select **ECO** → **Show ECO result** from the menu bar. The **ECO Indicator** dialog box appears.
- ② Select the **Enabled** check box. The percentage of paper saved is calculated starting from this point.



- ③ After printing, display the **ECO Indicator** dialog box again to confirm the percentage of paper saved.



To reset the percentage of paper saved to 0%, click the **Clear** button.

4. Revision History

Rev. No.	Date of Revision	Changes
Rev. 1.0	Mar. 2010	New release



**SPECIAL PRODUCTS DIVISION
STAR MICRONICS CO., LTD.**

536 Nanatsushinya,
Shimizu-ku, Shizuoka, 424-0066 Japan
Tel : (int+81)-54-347-0112 , Fax : (int+81)-54-347-0409

Please access the following URL
<http://www.star-m.jp/eng/d1/dl02.htm>
for the latest revision of the manual.

**OVERSEAS SUBSIDIARY COMPANIES
STAR MICRONICS AMERICA, INC.**

1150 King Georges Post Road, Edison, NJ 08837-3729 U.S.A.
Tel : (int+1)-732-623-5500 , Fax : (int+1)-732-623-5590

STAR MICRONICS EUROPE LTD.

Star House, Peregrine Business Park, Gomm Road,
High Wycombe, Bucks, HP13 7DL, U.K.
Tel : (int+44)-1494-471111 , Fax : (int+44)-1494-473333

STAR MICRONICS ASIA LTD.

Rm. 1901-5, 19/F., Enterprise Square Two,
3 Sheung Yuet Road, Kowloon Bay, Hong Kong
Tel : (int+852)-2796-2727 , Fax : (int+852)-2799-9344